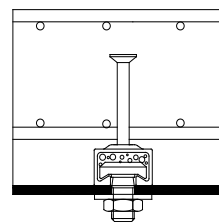


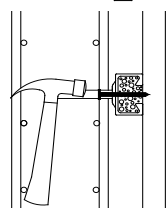
**1. Fixing anchor channel**

Install the channel surface flush and fix the channel undisplaceable to the formwork or to the reinforcement.

**a) Fixing to steel formwork**

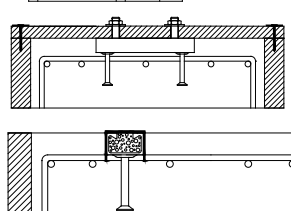
With JORDAHL channel bolts and nuts, with rivets, cramps or with magnetizing fixings.

Or

**b) Fixing to timber formwork**

With nails through the pre punched holes in the back of the channels and with staples.

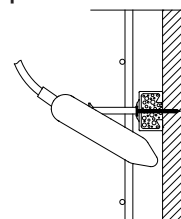
Or

**c) Fixing to anchor channels at the top**

- To timber batten on the side formwork (e.g. with JORDAHL channel bolts).
- Fixing from above directly to the reinforcement or to a mounting rebar, attach the channel by wire binding.

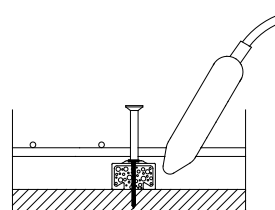
2. Pouring concrete and regular compacting of concrete

Compact the concrete properly around the channel and the anchors.



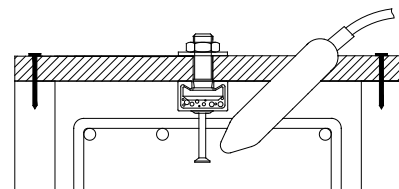
a) sidefaces to the formwork

Or



b) in soffits

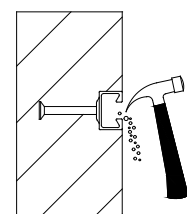
Or



c) into top surfaces of concrete up stands

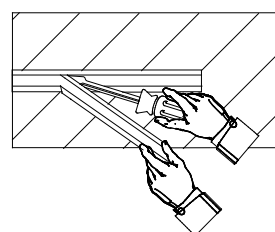
3. Removing of the channel infill

Clean the channel on the outside after removing the formwork.

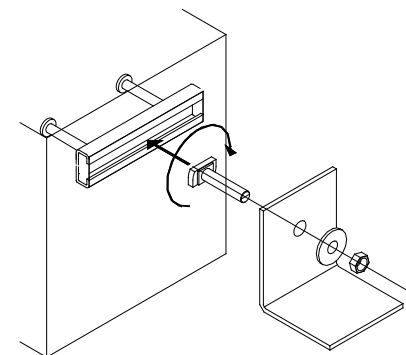
**a) Foam infill**

With a hammer or a hook.

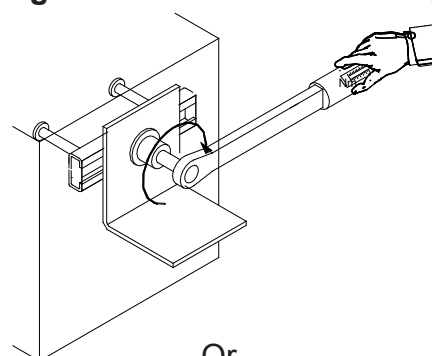
Or

**b) PE - foam infill**

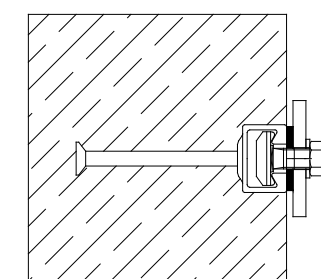
By hand or with help of a screw driver in one piece.

**Fig.1****a) General application (fixture in contact with concrete)**

1. Insert the JORDAHL-channel bolt into the channel slot at any point along the channel length (Fig. 1).
2. Turn the channel bolt 90° clockwise and the head of the bolt locks into position (Fig. 1).
3. Do not mount the channel bolt closer than 25 mm from the end of the channel.
4. Install the fixture. Use a washer under the nut (Fig. 1).
5. Check the correct fit of the JORDAHL- channel bolt. The groove on the shank end of the channel bolt must be perpendicular to the channel longitudinal axis.
6. Tighten the nuts by a calibrated torque wrench (see Fig. 2) to the setting torque according to Table a). The setting torque shall not be exceeded.

Fig.2

Or

**Fig.3****b) Steel-to-steel contact (fixture in contact with the anchor channel only)**

1. Insert the JORDAHL-channel bolt into the channel slot at any point along the channel length (Fig. 1).
2. Turn the channel bolt 90° clockwise and the head of the screw locks into position (Fig. 1).
3. Do not mount the channel bolt closer than 25 mm from the end of the channel.
4. Use washers between channel and fixture to avoid bearing of the fixture against the concrete (Fig. 3)
5. Install the fixture. Use a washer under the nut (Fig. 1).
6. Check the correct fit of the JORDAHL- channel bolt. The groove on the shank end of the channel bolt must be perpendicular to the channel longitudinal axis
7. Tighten the nuts by a calibrated torque wrench (see Fig. 2) to the setting torque according to Table b). The setting torque shall not be exceeded.

Table b)	Channel Bolt Grade/Material	T _{inst} [Nm]								
		M6	M8	M10	M12	M16	M20	M24	M27	M30
JA, JB, JC, JE, JD/JUD, JH/JUH	4.6	3	8	15	25	65	130	230	340	460
	A4-50	-	-	13	24	60	115	-	-	-
	8.8	-	20	40	70	180	360	620	-	-
JXH, JXB	A4-70, FA-70	-	15	30	50	130	250	-	-	-
	8.8	-	-	-	70	180	-	-	-	-
		-	-	-	-	180	360	-	-	-



ICC-ES ESR-2854

JORDAHL® Anchor Channels JTA
K28/15, K38/17, W40/22, W50/30,
W53/34, W55/42, W72/48
JXA W38/23, JXA W53/34

Channel Bolts
JA, JB, JC, JD, JE, JH,
JXH, JXB

Manufacturer: JORDAHL GmbH